

Before You Begin

Welcome to ENlighten Distributed Systems Manager (DSM)[™], a scalable, standards-based application enabling you to easily manage complex UNIX environments.

ENlighten/DSM's system administration features allow you to manage users, disks, backup and restoring functions, security, processes, and printer functions throughout your network. In addition, ENlighten/DSM allows you to monitor items and then take action. For example, processes can be selected, suspended, or terminated on an intranet-wide basis.

ENlighten/DSM also has events management capabilities so that you can automatically collect and save status, configuration, performance, and capacity information and make it available for monitoring by ENlighten/DSM and SNMP managers such as SunNet Manager, HP OpenView, or IBM NetView. As an SNMP agent, ENlighten/DSM captures error messages and alerts, and provides this information to the SNMP manager.

ENlighten/DSM's events feature also enables you to monitor devices, processes, resources, and services on UNIX systems. It reduces network traffic by eliminating the need for hundreds of polling messages. Instead, you are only notified via the Status Map or an SNMP-aware application when a characteristic reaches an alert stage whose threshold you determine. Status maps can be customized with meaningful backgrounds, such as office floor plans or geographical maps.

ENlighten/DSM provides event monitoring tools and system administration features that allow object-level management through Motif window manager ([Figure 1-1](#)).

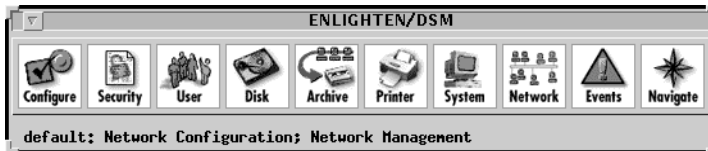


Figure 1-1 Graphical user interface

The program's cross-platform graphical user interface makes the inconsistencies of managing a distributed, corporate intranet with multiple UNIX operating systems transparent. Complex, multi-step operations are reduced to more intuitive single functions, reducing the chance of error. You spend less time learning platform-specific protocols in order to effectively manage and administer a network of systems.

Because ENlighten/DSM is scalable, it can easily be configured to manage a broad spectrum of networks, ranging from smaller ones with just a few hosts to extensive corporate systems.

ENlighten/DSM's key features include:

- Enterprise Management Database (EMD)
- Centralized event configuration management
- Programmable events
- DNS, NIS, NIS+, Setup + management
- NFS management
- Network printer/spooler management
- Hardware/software asset tracking
- Security auditing
- Disk/file system management
- Logical resource pooling
- User account templates
- Crontab management
- Backup scheduler
- Remote software distribution/installation
- Application logfile monitoring
- Scalable, customizable user interface
- Node health at a glance

